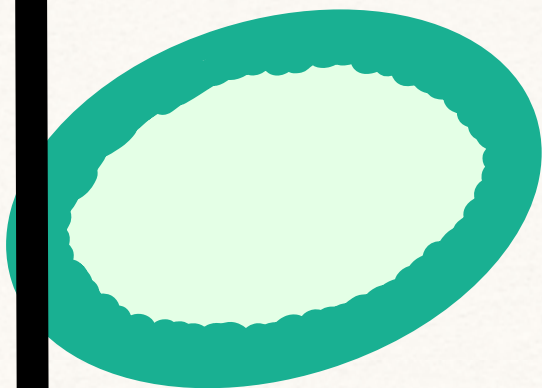
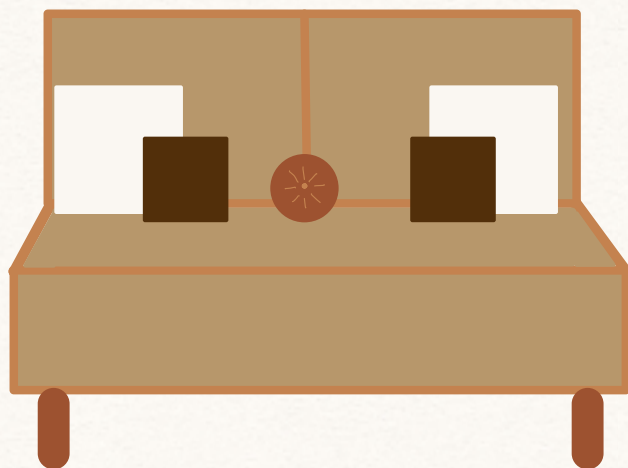


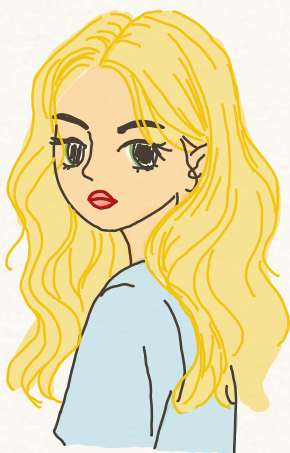
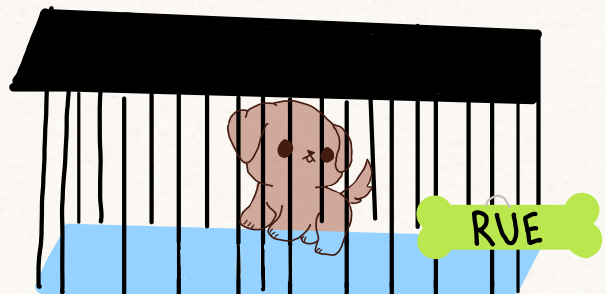
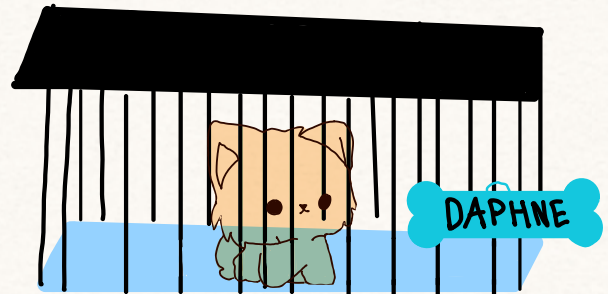
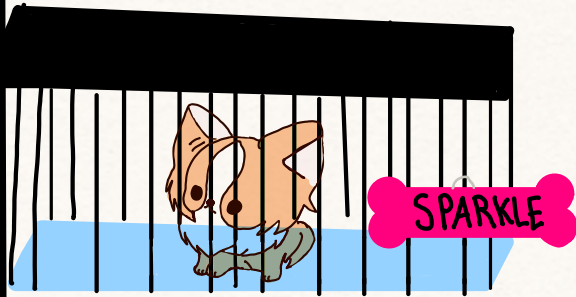


# HOME

Follow the arrow  
to customize your  
profile.



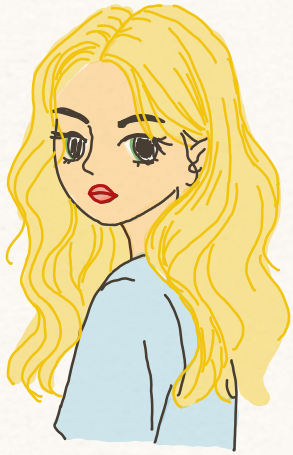
# DOG SHELTER



JOLIE

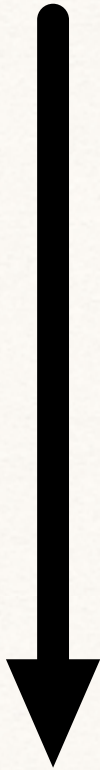
Which dog would you like?  
The chocolate lab, the shi tzu,  
the corgi, or the golden  
retriever?

C  
O  
N  
T  
I  
N  
U  
E

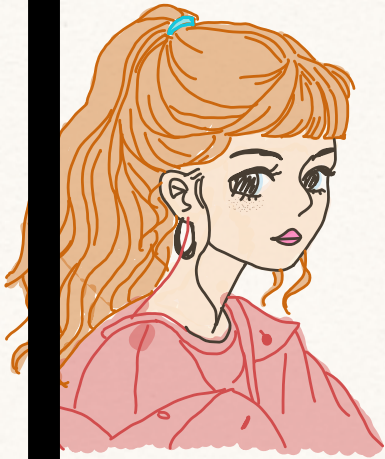


*JOLIE*

Select and save your puppy so  
you don't lose it, then, take it  
home.



C  
O  
N  
T  
I  
N  
U  
E



## DR. WARREN

To feed your puppy, use the food on page 4. When you run out of puppy food, move to adult food. To give your puppy water, use the water. You should feed your puppy twice per day. Give them water once.



## DR. WARREN

When you have run out of food or water, your puppy has passed away. You can bury them in the pet cemetery. **DO NOT MULTIPLY THE FOOD OR WATER** because it will poison your pet.

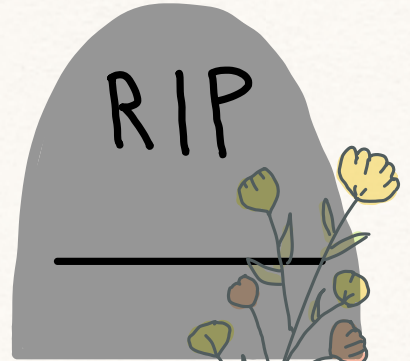


## DR. WARREN

When you want a new puppy, redownload this note. On a different note, play with your puppy with the toys. Take your puppy on walks by bringing them on other notes while you work on them. You will soon form an unbreakable bond with your pup.

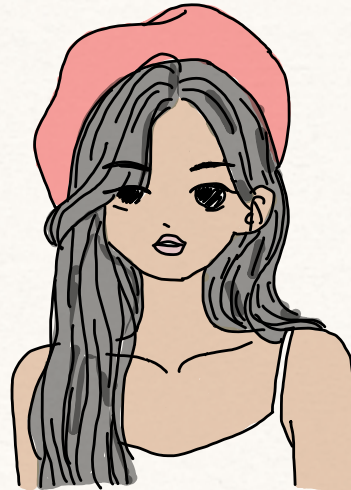


# PET CEMETERY

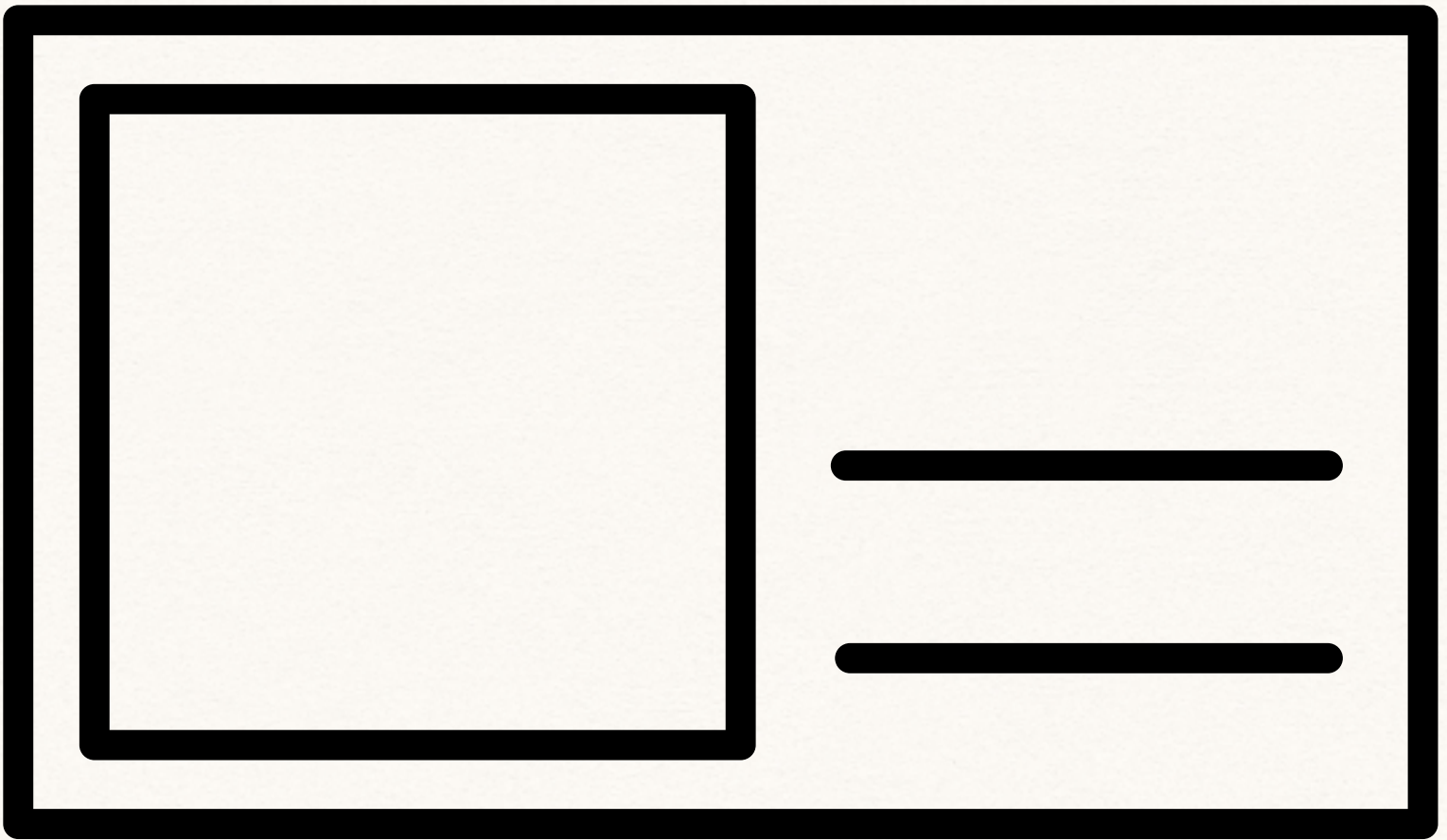




Choose your avatar and drag it into the passport.



Write your name in the passport.



Make the passport smaller and drag it to your homepage.



## Credits:

urfavepreppy for the dogs

veerlepustjens for the female avatars

mischa for the male avatars

sassysonya for the flowers in the cemetery

And marigoldsorsall for everything else

Thank you so much for playing My Virtual Pet: Snuggle Bug. Please do not repost, but if you have suggestions I would love to hear them if you tag it #marigold! (Don't include the exclamation point 😊)

@2022marigoldsorsallmyvirtualpetsnugglebug